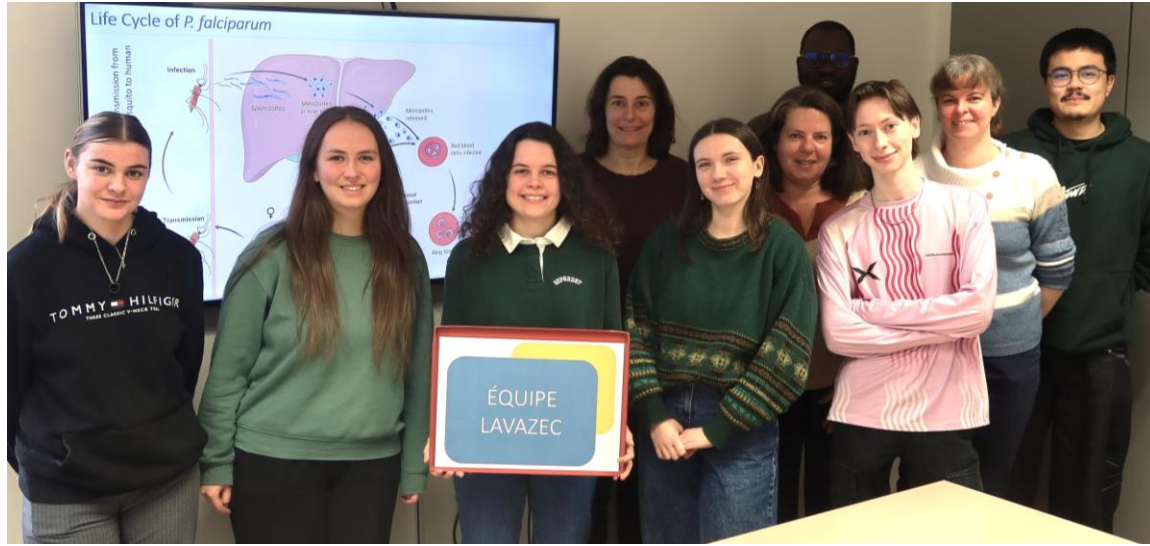
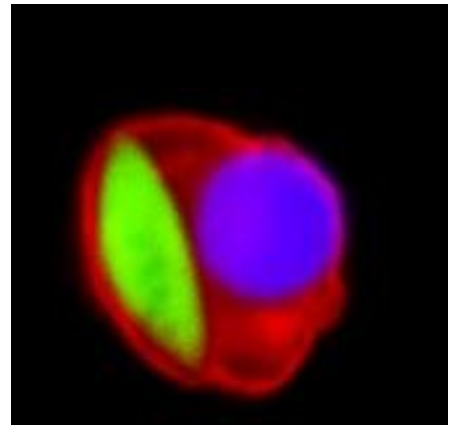
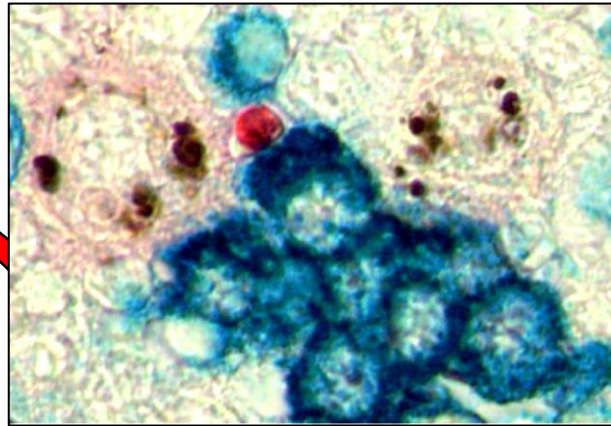


# Equipe « Interactions Plasmodium-erythroid cells » Institut Cochin Paris

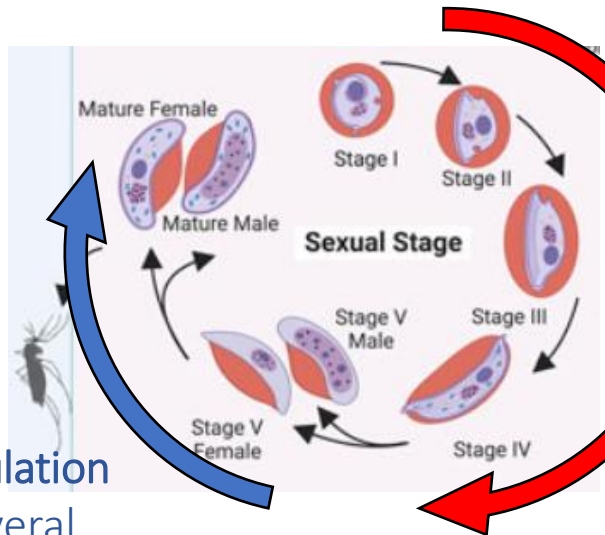


Axis 2  
How *P. falciparum* infection affects erythropoiesis ?



Axis 3  
Characterization of erythroblast infection

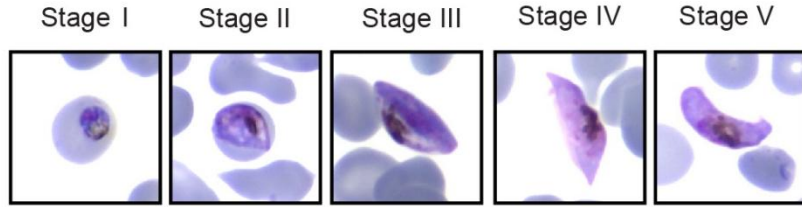
Axis 1  
How *P. falciparum* parasites modify the mechanical properties of infected erythrocytes?



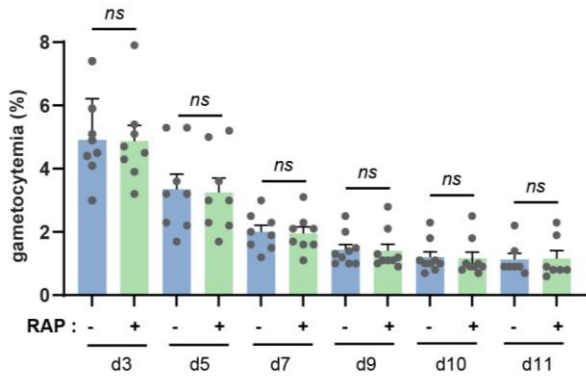
Circulation  
several  
days/weeks

Sequestration  
in the bone marrow  
parenchyma

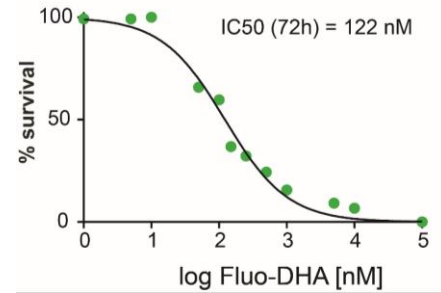
## *P. falciparum* gametocyte culture



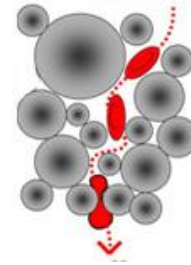
## Gametocytemia follow-up



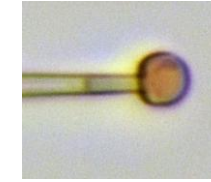
## Survival assays (Luciferase-based assay)



## Mechanical properties assays



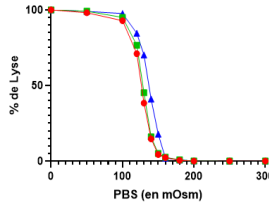
Microfiltration



Micropipette aspiration

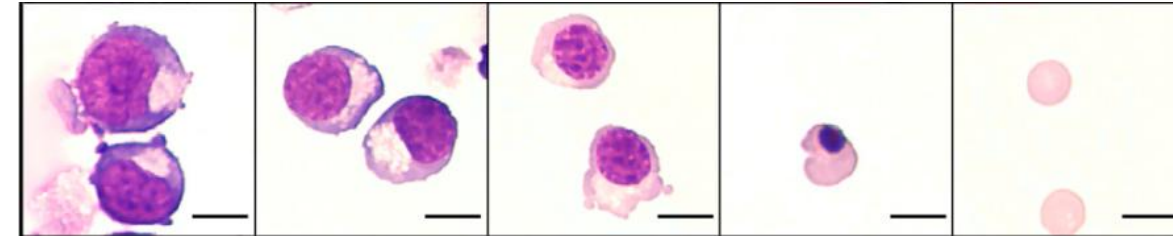


Isosmotic lysis

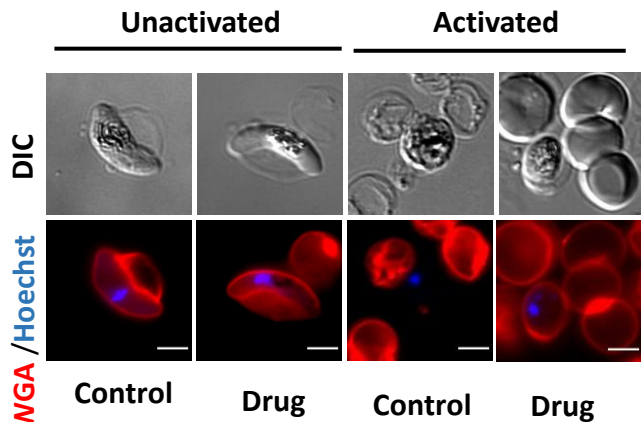


Osmotic fragility

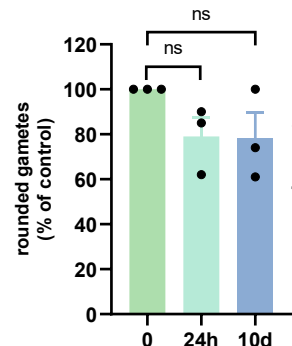
## Ex vivo erythropoiesis



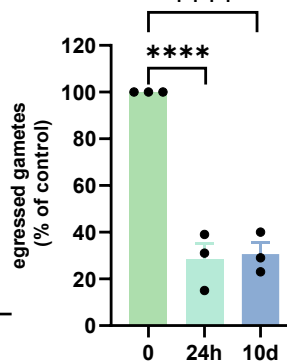
## Gametogenesis assays



### Rounding



### Egress



## Erythroblast infections

